



BRITESPAN
BUILDING SYSTEMS INC

Case Study

CUSTOMER NAME: Drost Family Dairy Farm, Kyle and Adrienne Drost
BUILDING SIZE & SERIES: 50' x 100' Atlas Building Series
BUILDING USE: Dairy Heifer Barn
AUTHORIZED DEALER: Plumeville Construction Inc.

Drost Family Dairy Farm Dairy Heifer Barn

Kyle and Adrienne Drost purchased their farm from Kyle's parents in May of 2013. Over the last year and a half they started thinking about getting a new heifer barn. The Drost's neighbour's had a Britespan building for their horses, and they had seen them going up all over their area. After doing some research online and watching Britespan's videos, they decided to choose a Britespan building for their new heifer barn.



“We decided to check out Britespan, and haven’t regretted it at all, we are really impressed with it.”

Kyle and Adrienne Drost purchased their farm from Kyle’s parents in May of 2013. Over the last year and a half they started thinking about getting a new heifer barn. The Drost’s neighbour’s had a Britespan building for their horses, and they had seen them going up all over their area. After doing some research online and watching Britespan’s videos, they decided to choose a Britespan building for their new heifer barn.

“We decided to check out Britespan, and haven’t regretted it at all, we are really impressed with it,” said Adrienne. The Drost’s purchased a 50’ wide by 100’ long Atlas Building Series with 3’ eaves, a concrete foundation and walls, curtains, and a 10’ wide by 9’ high overhead door.

“We just love the light. We don’t have to turn on the few lights until about 6:00 at night. The cows love it too; it’s nice for them to have the natural light coming in. It’s easier for us to see them from when they were in the big barn for catching heats,” said Adrienne.

The Drost’s got in touch with Britespan and the process started within a week. “Plumeville was fantastic helping us figure out what we needed, and were great to help us with anything we had questions about.”

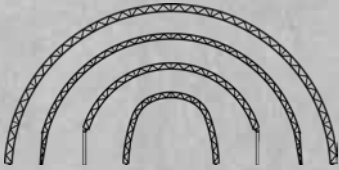
**For more information, call us at
1.800.407.5846 or visit us online.
britespanbuildings.com**



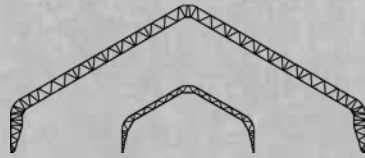
Building Series

Britespan has been in the fabric building industry since 1994, offering the widest product line available today. We design, engineer and manufacture each product line in-house.

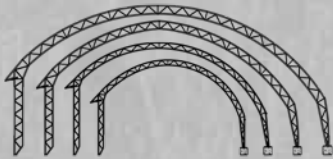
Our structures are engineered to be portable, temporary or permanent, with rapid installs even in remote areas.



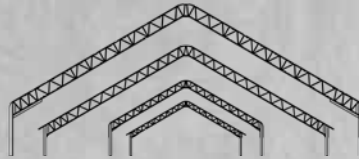
Atlas Series
24' - 108' wide



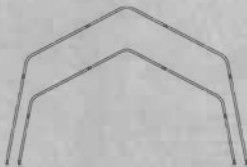
Genesis Series
80' - 200' wide



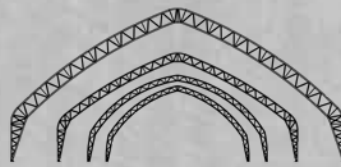
Easy Access Series
38' - 67' wide



Epic Series
80' - 120' wide



Accent Series
26' - 32' wide



Apex Series
53' - 100' wide



Rigid Beam Series
Up to 300' wide

Custom eaves, heights and slopes available

Custom Fabric Colours Available

Contact us for details on our full line of colour options or to request fabric samples.

Why Britespan?



HOT DIP GALVANIZING

Post-weld hot dip galvanizing bonds to steel to provide lifelong corrosion resistance from the inside out.



VENTILATION

Large volumes of interior air space give you superior air quality and ventilation.



CLEARSPAN INTERIOR

With no interior columns, movement throughout the interior is easy for vehicles and equipment.



LIGHT

Naturally bright interiors create comfortable environments and help reduce energy costs.



QUALITY

Constructed from quality North American steel and engineered to comply with the most current building codes.



RETURN ON INVESTMENT

Our structures provide large, bright, secure spaces with reduced operating and maintenance costs.

Britespan buildings can be added onto existing Cover-All Buildings

For more information, call us at
1.800.407.5846 or visit us online.

britespanbuildings.com

BRITESPAN
BUILDING SYSTEMS INC